


All drawings and specifications from Specialists ( nominated or domestic ) to be submitted in duplicate to the Architect by the Main Contractor for comments, prior to any fabrication works. The Architect will assist in checking this information but any failure to detect inconsistencies or errors will not relieve the Contractor of his responsibility and the Architects comments will be restricted accordingly.

As the client you have specific duties under these regulations. These duties are a legal requirement. For information on your responsibilities please go to [www.HSE.gov.uk](http://www.HSE.gov.uk) then CDM Regulations 2015.

SYMBOL SCHEDULE


- North
- 
- A circular diagram with a vertical line and a diagonal line. The vertical line is on the right side of the circle, and the diagonal line is on the left side. A label "North" is positioned above the circle.

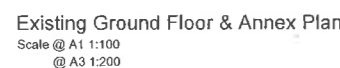


scale (A1/A3)	data	drawn by
Varies	AUG 15	JGS

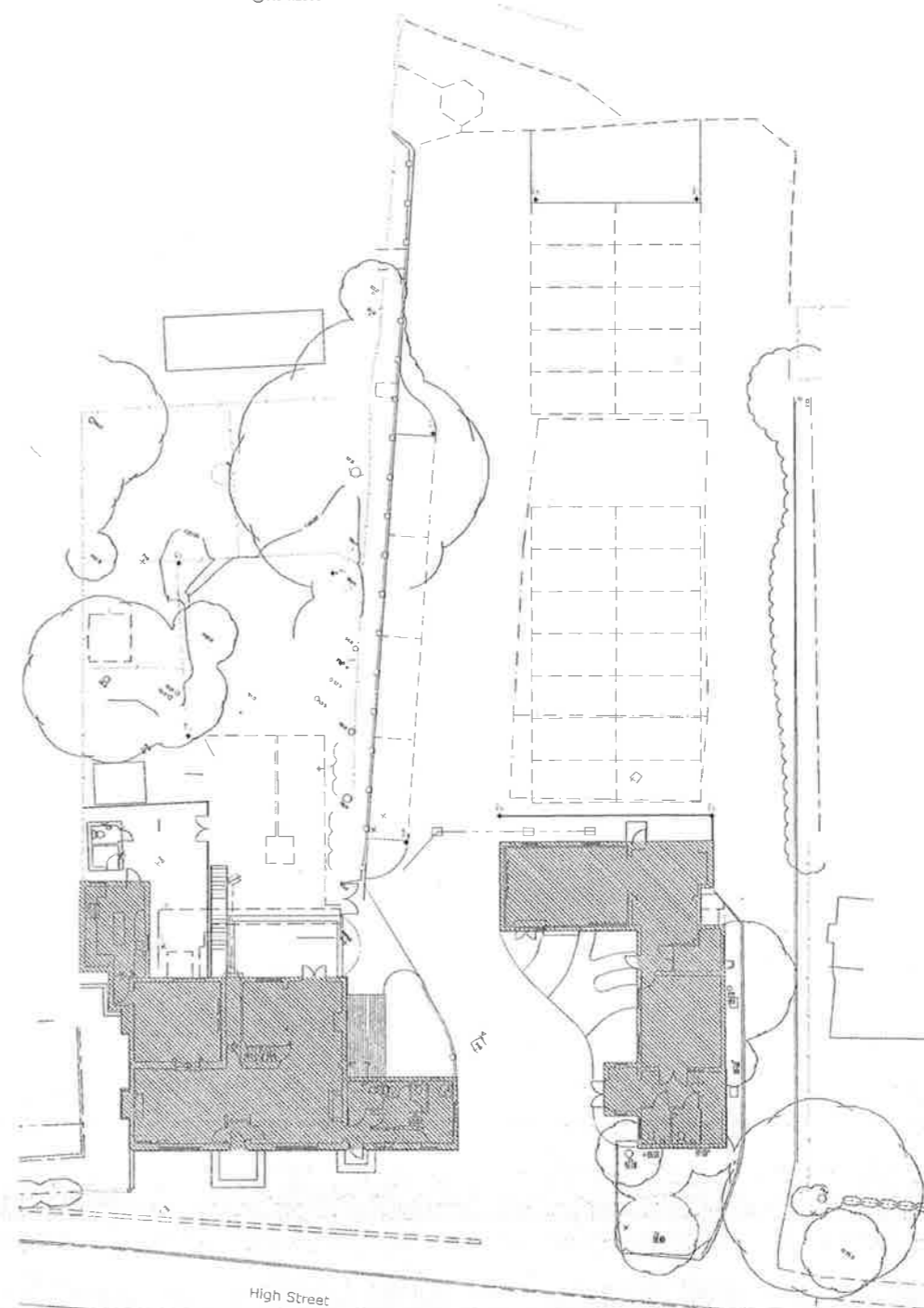
**TAYLOR+Co** | ARCHITECTS  
INTERIOR DESIGN • INNOVATION • CONSERVATION  
PO BOX 57 | OMBERSLEY | WORCESTERSHIRE | WR8 0YG  
(t) 01905 821800 (e) [design@taylorandcoarchitects](mailto:design@taylorandcoarchitects)

taylorandcoarchitects.co.uk

RIBA 



Site Location Plan  
Scale @ A1 1:1250  
@ A3 1:2500



Proposed Site Plan  
Scale @ A1 1:200  
@ A3 1:400

