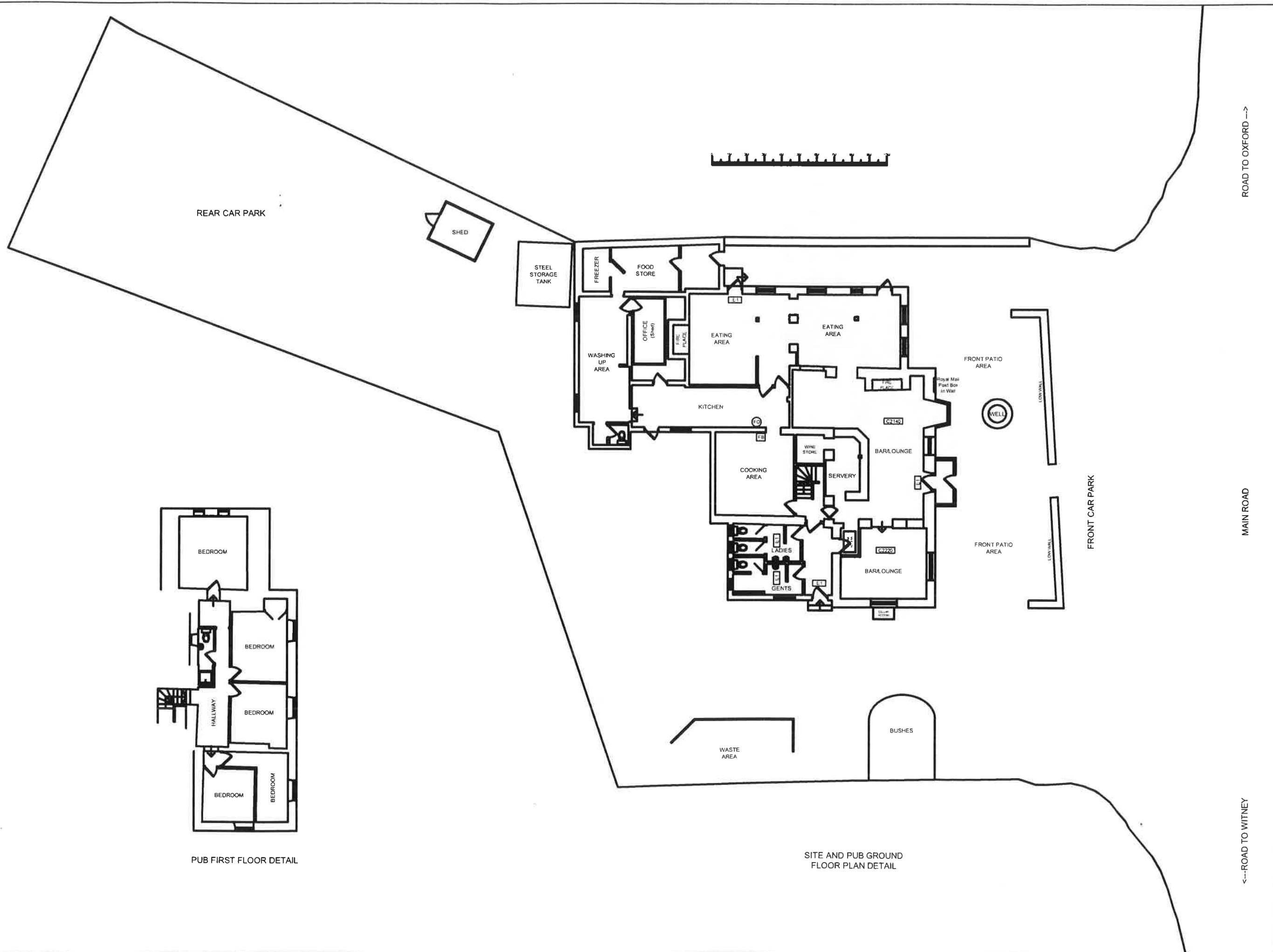


NOTE: To the best of my knowledge, all information is true and correct as at the date of completion. Any responsibility to be reported to the Authority.

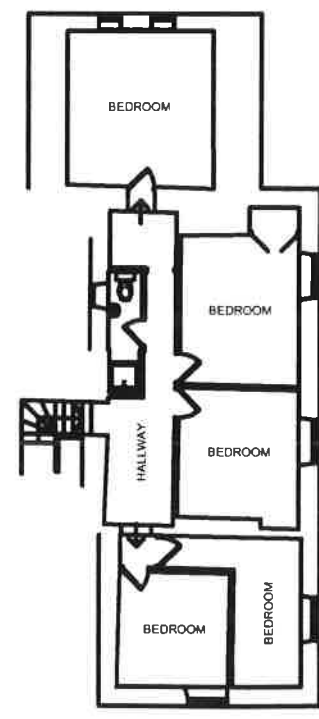


ROAD TO OXFORD →

MAIN ROAD

← ROAD TO WITNEY

- KEY**
- [N1] General Fire Notice
  - [N2] Staff Fire Notice
  - [N3] Fire Door Keep Locked sign
  - [N4] Fire Exit Keep Clear sign
  - [N5] Fire Door Keep Closed sign
  - [FB] Fire Blanket
  - [DP] Dry Powder Fire Extinguisher
  - [CC] Carbon Dioxide Fire Extinguisher
  - [FC] Foam Fire Extinguisher
  - [WA] Water Fire Extinguisher
  - [E1] Emergency Light Fitting
  - [ES] Emergency Exit Sign
  - [H] Heat Detector
  - [S] Smoke Detector
  - [BGC] Break Glass Call Point
  - [FAS] Fire Alarm Sounder
  - [FAP] Fire Alarm Panel
  - [AWP] Amusement with Prizes
  - [SWP] Skill with Prizes
  - [ATM] Cash machines
  - [PP] Play Phone
  - [CH] Ceiling Height
  - [JB] Juke Box
  - [CM] Cigarette Machine



PUB FIRST FLOOR DETAIL

SITE AND PUB GROUND FLOOR PLAN DETAIL



PROPERTY SERVICES DEPARTMENT  
THE ENGINEERING GROUP  
BURNLEY ROAD, WITNEY  
OX10 0EJ  
Tel: 01235 537000 Fax: 01235 537000

**NAME**  
The Boot Inn  
Burnley Road, Witney  
Nr Oxford OX10 0EJ

**DATE**  
21/01/2007

**SCALE**  
1:100

**BY**  
A.S.

**PROJECT No.**  
B44 - 01