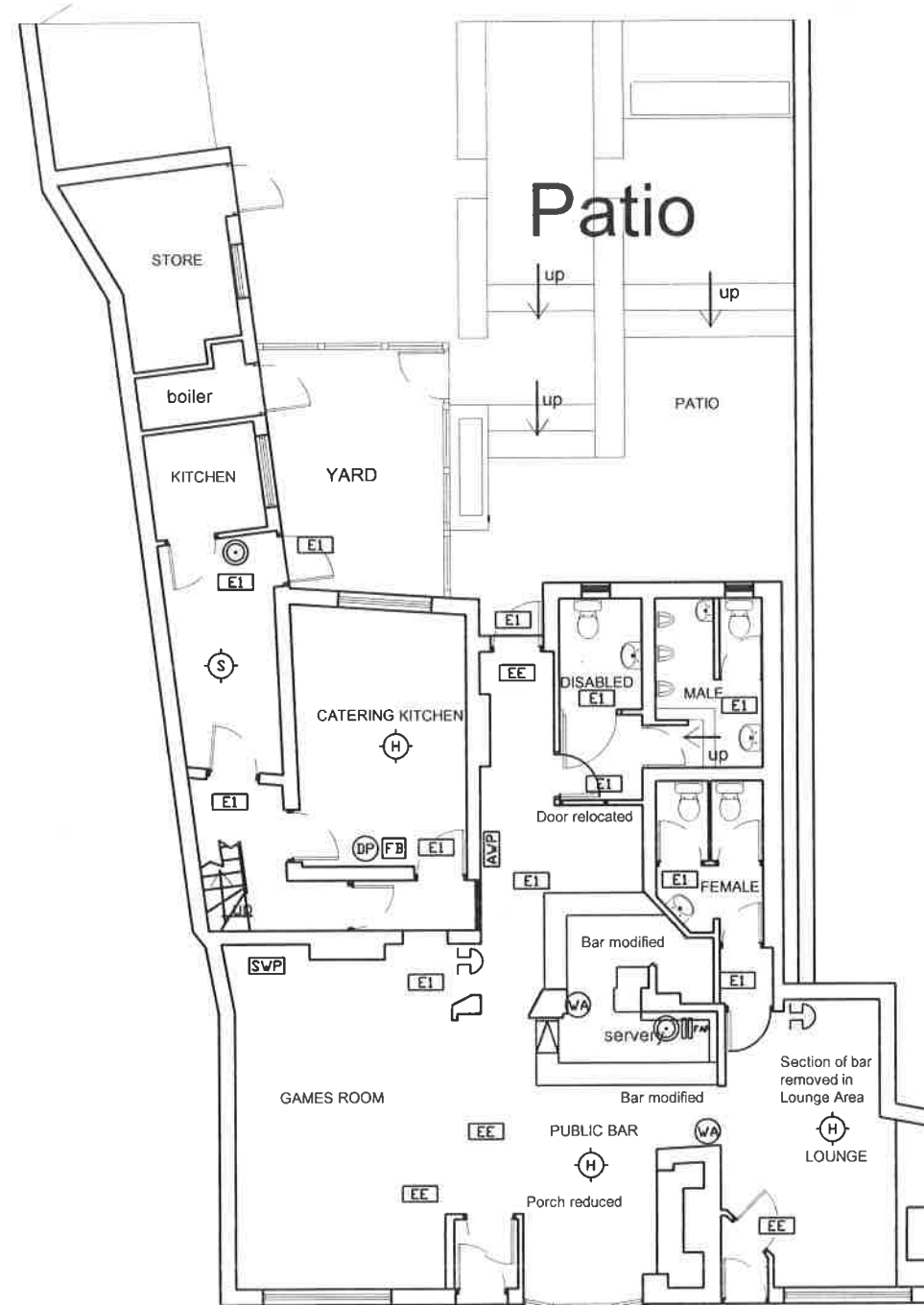


SITE PLAN 1/200

FLOOR AREAS

Area	m2
Total Ground Floor Area	151
Games Room	26.2
Public Bar	27.9
Lounge	17.5
Kitchen	15.8
Utility / Food store	8.7
Gents Toilet	6.5
Ladies Toilet	5.5
Disabled Toilet	3.3



PROPOSED GROUND FLOOR PLAN

- KEY**
- N1 General Fire Notice
 - N2 Staff Fire Notice
 - N3 'Fire Door Keep Locked' sign
 - N4 'Fire Exit Keep Clear' sign
 - N5 'Fire Door Keep Locked' sign
 - FB Fire Blanket
 - DP Dry Powder Fire Extinguisher
 - CD Carbon Dioxide Fire Extinguisher
 - FD Foam Fire Extinguisher
 - WA Water Fire Extinguisher
 - E1 Emergency Light Fitting
 - EE Emergency Exit Sign
 - H Heat Detector
 - S Smoke Detector
 - C Break Glass Call Point
 - U Fire Alarm Sounder
 - FAP Fire Alarm Panel
 - AWP Amusement with Prizes
 - SVP Skill with Prizes
 - ATM Cash machines
 - PP Pay Phone
 - J Juke Box
 - C Cigarette M/c

JPA

client
Charles Wells

scheme
The New Bowling Green
13, St Nicolas Church Street.
Warwick CV34 4JD

title
Ground Floor Plan
Licensing

drawing no
1773 / 20B

scale
1/100 & 1/200

date
May 05

drawn
checked

John pass associates ltd
12, high street warwick
warwickshire CV34 4AP
tel: (01926)400645 fax:(01926)400913
email: jpa@johnpassdesign.co.uk

do not scale from this drawing all dimensions to be checked on site
This drawing is copyright John Pass Associates Ltd